

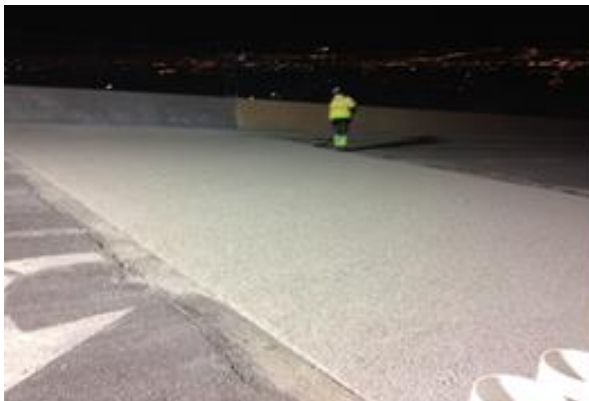
PLASTIFLOOR® 800 BD

Waterproofing Bridge Deck Protection under asphalt wearing layers

Plastifloor® PUMMA resins are able to offer a wide range of high performance bridge decking solutions.

Based on the fast curing and incredibly durable methyl methacrylate (MMA), PUMMA and urethane modified resin technology, these resin systems are ideal for high traffic areas and help overcome the installation challenges resulting from long periods of inclement weather. Elastic crack-bridging properties under a wide range of temperatures, resistance to chlorides and aggressive chemicals such as fuel, oils and hydraulic fluids, speed of installation and outstanding durability are some of the most important factors that customers expect, so our systems have been developed to offer highest performance in all of these areas.

The Plastifloor® 800 Bridge Deck Waterproofing System will provide an effective waterproof layer to the concrete bridge deck.



PROTEKTION SOLUTIONS FOR CONCRETE BRIDGE DECK

System structure

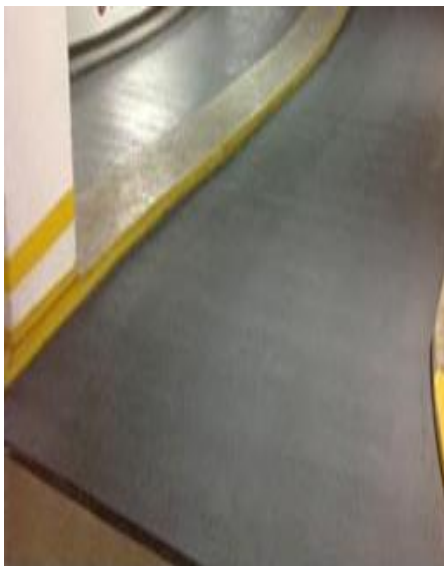
1. Plastifloor® 112/118 BD Primer + broadcasted (QS 0.3–0.8 mm)
2. Plastifloor® 800 BD Waterproofing layer
3. Plastifloor® 418 BDTack coat broadcasted with quartz sand
4. Wearing course: hot mixed asphalt / asphalt concrete

PLASTIFLOOR® 800 BD

Waterproofing Bridge Deck Protection under asphalt wearing layers

SOLUTIONS

- New liquid applied membrane Plastifloor® 800 BD Waterproofing
- Urethane modified resin, based on methyl methacrylate
- Installation at temperatures down to -20°C
- High flexibility at very low-temperatures
- Elastic crack-bridging properties under a wide range of temperatures
- Fast application / fast curing
- Short down time



ADVANCED SYSTEM

- Light-weight system
- Customized solution
- For concrete decks in new construction and for refurbishment
- Variety of Primers to suit each exposure
- VOC compliant and contains no solvent
- Setting and Curing times may be adjusted to suit ambient and site conditions
- Good bonding and high shear strength to asphalt under different application temperatures
- Global technical support

WWW.PLASTI-CHEMIE.DE